



# FIBER OPTIC CABLE



# TONGDING

*Connecting Horizons*

## INTRODUCTION

Tongding Timeline	P4
Company Profile	P6
Production Base	P7
Optical Fiber Facilities	P8

## OPTICAL FIBER

Wavelength Band Extended Non-dispersion Shifted Single-mode Optical Fiber (G.652D)	P11
Non-zero Dispersion Shifted Single-mode Optical Fiber for DWDM (G.655C)	P12
Bend Insensitive Single-mode Optical Fiber(G.657 A2)	P13
Low Loss Single-mode Optical Fiber (G.652D)	P14
Low Loss Bend Insensitive Single-mode Optical Fiber(G.657 A2)	P15

## FIBER OPTIC CABLE

ADSS Cable	P17
Single-jacket Non-armored Cable	P18
Single-jacket Single-armored Cable	P19
Double-jacket Single-armored Cable	P20
Double-jacket Steel Wire Armored Cable	P21
Figure 8 Cable	P22
Multi-tube Ribbon Cable	P23
Stranded Air-blowing Micro Cable	P24
Drop Cable	P25
Multi-fiber Breakout Cable	P26
Multi-fiber Distribution Cable	P28
Invisible Cable	P29
Hybrid Feeder Cable	P30

## CERTIFICATE

Tongding Certificate	P31
----------------------	-----



**October 2001**

fiber cables and changes

**June 1999**

**June 2006**

**March 2004**

is fiber optic cable

**October 2010**

1.4 million fiber-km

**June 2009**

**October 2010**

**December 2008**

Tongding opens optical fiber  
capacity of 7 million km of fiber

**September 2011**

**October 2011**

**October 2014**

**December 2015**

**December 2014**

**October 2016**

**July 2017**

manufacturing fiber optic cable, ODN components and copper cable.

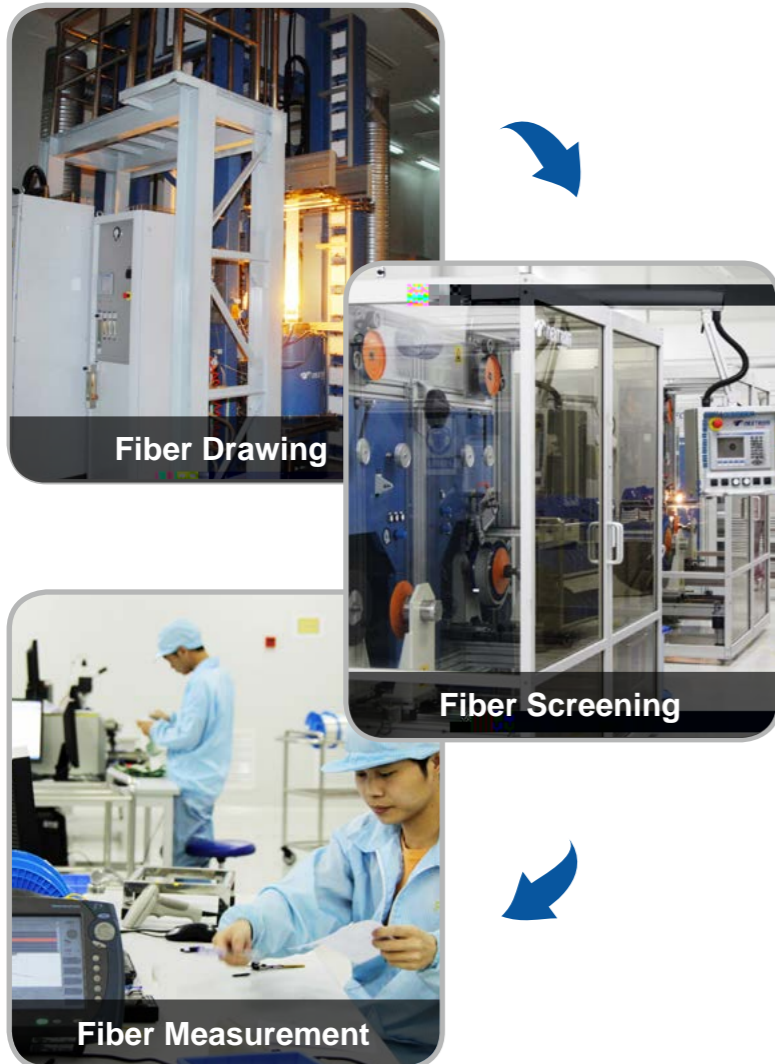


#### COPPER CABLE ANNUAL PRODUCTION CAPACITY

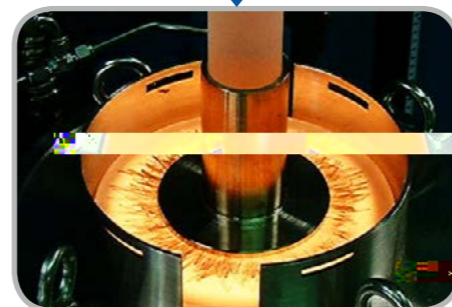
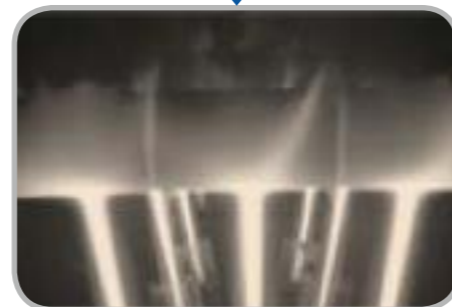
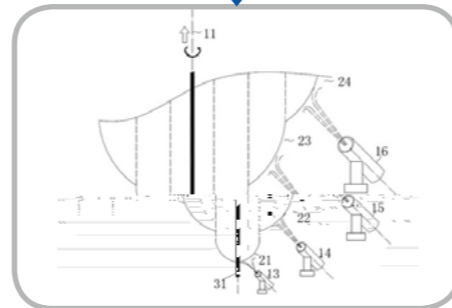
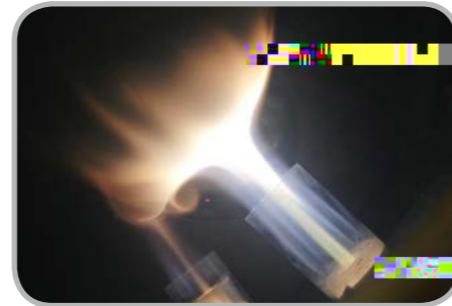


# Optical Fiber Facilities

## OPTICAL FIBER



## FIBER PREFORM



## FIBER OPTIC CABLE

### Coloring



### Loose Tube



### Cabling



### Sheathing



Tongding has a factory specialized in FTTH fiber optic cable with 73 lines making it the



# OPTICAL FIBER

Wavelength Band Extended Non-dispersion Shifted Single-mode Optical Fiber(G.652D)		
Fiber Property	Main Indexes	Technical Parameter
		1%
		12um
		6%
		0.6um
		4m
		0.34dB/km
		0.34dB/km
		0.20dB/km
		0.24dB/km
		0.04dB/km
		0.03dB/km
		0.05dB
		0.05dB
		0.2ps/(km <sup>1/2</sup> )
		0.1ps(km <sup>1/2</sup> )
		0.091ps/(nm <sup>2</sup> .km)
		3.4ps/(nm.km)
		5.3ps/(nm.km)
	Cable cutoff wavelength $\lambda_c$	1260nm
		1%
		20
		0.05dB/km
	,relative humidity 85%,30 days,at 1550nm)	0.05dB/km
		0.05dB/km
	,relative humidity 50%,30 days,1550nm)	0.05dB/km
	1 turn, 32mm 1550nm	0.05dB
	100 turns, 50mm 1310nm	0.05dB
	100 turns, 50mm 1550nm	0.05dB
	100 turns, 60mm 1625nm	0.05dB



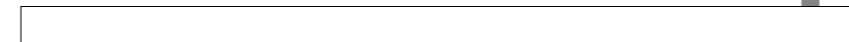


Low Loss Single-mode Optical Fiber (G.652D)		
Fiber Property	Main Indexes	Technical Parameter
		1%
		12um
		6%
		0.6um
		4m
		0.32dB/km
		0.32dB/km
		0.18dB/km
		0.20dB/km
		0.03dB/km
		0.04dB/km
		0.04dB
		0.04dB
		0.1ps/(km <sup>1/2</sup> )
		0.04ps(km <sup>1/2</sup> )
		0.091ps/(nm <sup>2</sup> .km)
	Dispersion coefficient at 1285~1339nm	-3.4, 3.4ps/(nm.km)
	Dispersion coefficient at 1550nm	18ps/(nm.km)
	Dispersion coefficient at 1625nm	22ps(nm.km)
	Cable cutoff wavelength $\lambda_c$	1260nm
		1%
		20
		0.05dB/km
	and 85% RH,for 30 days)	0.05dB/km
		0.05dB/km
		0.05dB/km
	1 turn, 16mm 1550nm	0.05dB
	100 turns, 25mm 1330nm&1550nm	0.05dB
	100 turns, 30mm 1625nm	0.05dB



# ***FIBER OPTIC CABLE***

---





## Single-jacket Non-armored Cable



- Up to 288 fbers
- Gel-filled loose tubes are S-Z stranded for easy mid-span access

### Environmental Performance

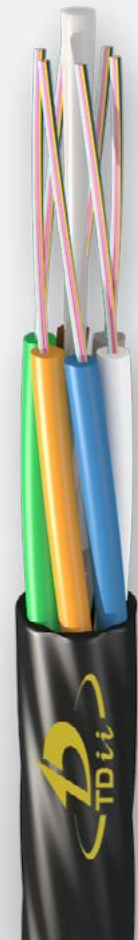
*Minimum bending radius*

*Temperature*









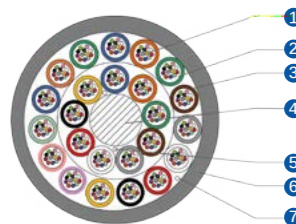
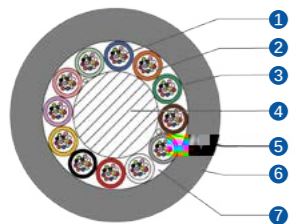
## Stranded Air-blowing Micro Cable

- Up to 288 fibers
- 
- Contain high fiber density to maximize the fiber count
- 
- 
- Gel-filled loose tubes are S-Z stranded for easy mid-span access
- 

### Environmental Performance

*Minimum bending radius*

*Temperature*

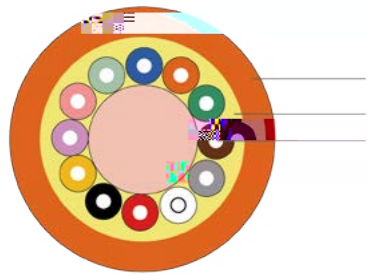


Structural parameters of cable					
Cable Cores	Number of loose tube	Stranded units	Fibers in each tube	Diameter of cable (mm)	Weight of cable (kg/km)





### Multi-fiber Distribution Cable







**Tongding Interconnection Information Co., Ltd.**

---

Tel: +86-512-63873510 / Email: [sales@tongdinggroup.com](mailto:sales@tongdinggroup.com) / Website: [www.tdgd.com.cn](http://www.tdgd.com.cn)  
Add: 8 Xiaoping Rd., Badu Economic Development Zone, Zhenze, Wujiang, Suzhou, Jiangsu, China 215233